

# CARRIE MAE WEEMS: BEACON

at Edward Hopper House, Nov. 10, 2017 – Feb. 25, 2018

All works courtesy of the Artist, and Jack Shainman Gallery, New York

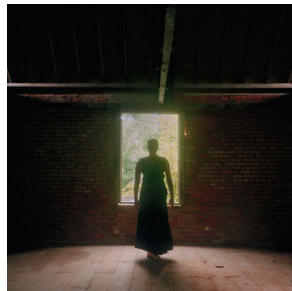
1. **Factory**, 2003-05

Archival Pigment Print  
33.25 x 29.25 x 1.25 in.



2. **Artist Standing in Factory**, 2003-05

Archival Pigment Print  
33.25 x 29.25. 1.25 in.



3. **On the Dock**, 2003-05

Archival Pigment Print  
33.25 x 29.25 x 1.25



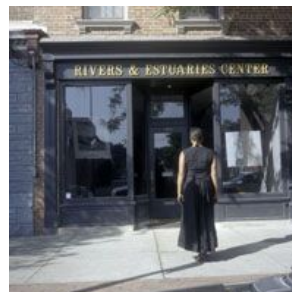
4. **On Shore Looking Across to Dock**,  
2003-05

Archival Pigment Print  
33.25 x 29.25. 1.25 in.



5. **Rivers & Estuaries center**, 2003-05

Archival Pigment Print  
33.25 x 29.25. 1.25 in.



6. **Seated, construction site**, 2003-05  
Archival Pigment Print  
33.25 x 29.25. 1.25 in.



7. **Dia Foundation**, 2003-05  
Archival Pigment Print  
33.25 x 29.25 x 1.25 in.



8. **Company Housing**, 2003-05  
Archival Pigment Print  
33.25 x 29.25. 1.25 in.



9. **Lewitt's Wall**, 2003-05  
Archival Pigment Print  
31.25 x 27.5 in.



10. **George Washington Bust**, 2003-05  
Archival Pigment Print  
33.25 x 29.25 in.



11. **Construction site, 2003-05**

Archival Pigment Print  
33.25 x 29.25 x 1.25 in.



12. **Artist, Seated (Yellow Painting), 2003-05**

Archival Pigment Print  
33.25 x 29.25 x 1.25 in.



13. **Seated, Row House, 2003-05**

Archival Pigment Print  
33.25 x 29.25 x 1.25 in.

